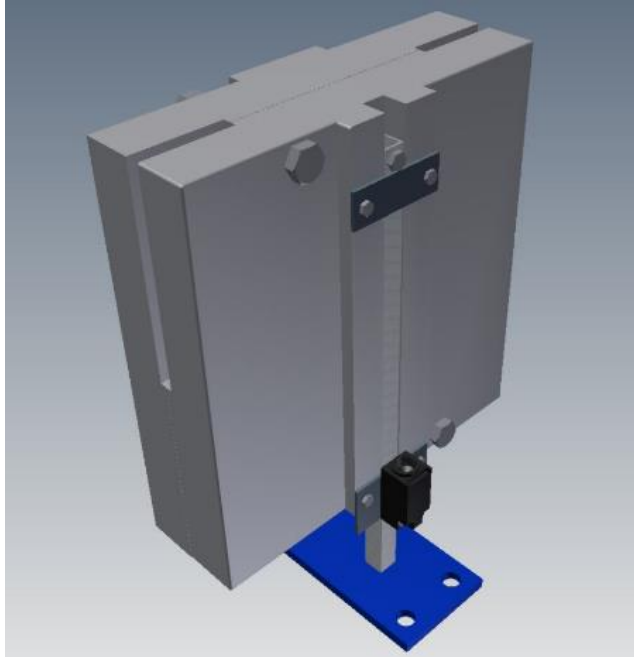
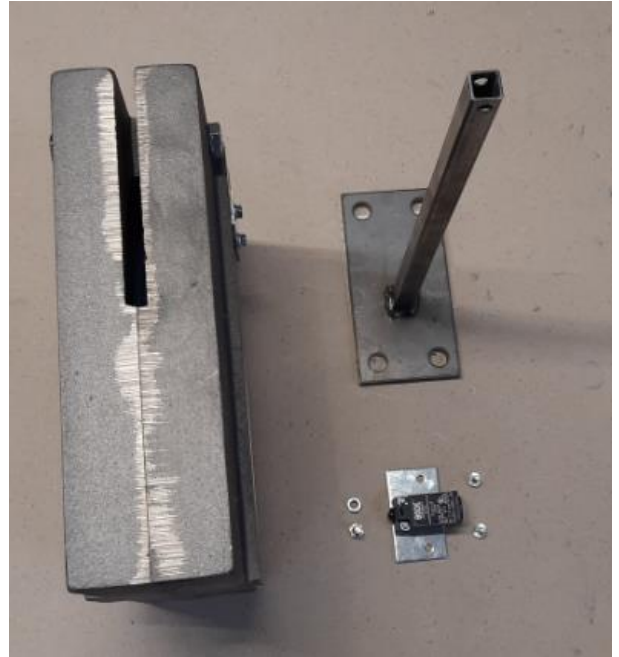


Scope of delivery:

- Guide stand (with base plate)
- Pre-assembled tension weight, consisting of two weight plates, integrated tension roller wheel and upper guide plate
- Slack rope switch with mounting plate and two locking screws M6 x 12 mm
- Hexagon screw M8 x 16 mm with nut M8 for the upper stop
- Mounting instruction



View of the SGI Tension Weight



Scope of delivery SGI Tension Weight

Assembly of the guide stand:

The guide stand is placed on a flat surface at the corresponding position on the shaft pit floor with four for the under-suitable screws.

In this case, a vertical positioning of the guide stand.

The long leg of the base plate is under the mounted Tension Weight.



Guide stand



Base plate of the guide stand

Mounting the Tension Weight:

The Tension Weight is with the groove on the Guide stand attached and with two e.g. place suitable wooden beams underneath. The slack rope switch (incl. mounting plate) is connected to the on-site line and following the designated position on the tension weight with two ratchet screws mounted.

Now the governor rope can be threaded and can be completely assembled. If the wooden beams are now removed, it will hang the tension weight in the governor rope.



Mounted Tension Weight



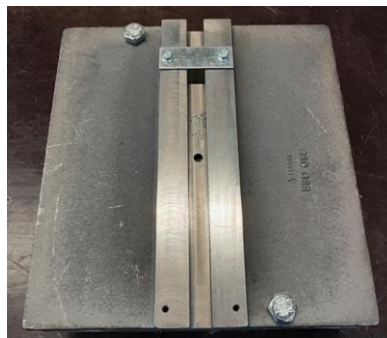
Slack rope switch with mounting plate

The hex head screw is at the top of the guide post mounted as an upper stop. For this purpose the nut is in the Square tube inserted and screwed in the screw. Finally the position and function of the slack rope switch checked.



upper stop and guide plate

Alternatively, the tension weight can also be disassembled for inserting the governor rope become. For this purpose the two six-square-head screws (M16 x 120) including the nuts and spring washers disassembled. Then the nut (M12) of the clamping roller axle including spring washer disassembled. Now the two weight plates carefully separated and the loading and unloading the governor rope can be inserted.



Tension Weight half part 1



Tension Weight half part 2

With the tensioning pulley Ø 200 mm, the jump-off protection is provided by two notched dowel pins executed. In the version with the tensioning pulley Ø 300 mm, the notch dowel pins, as the mold of the weight halves provides protection against jumping off. If the tensioning pulley is to be removed from the axle, it is during assembly. It is essential to ensure that the shim ring (15 x 21 x 0.5 mm) is on the Axis or stud screw (M12 x 100) is pushed on before the tension roller wheel is attached. The two halves of the weight are assembled in reverse order follow how the disassembly.



Grooved dowel pins as jump-off protection and tension pulley with shim

IMPORTANT:

All screws are pre-assembled hand-tight and must be checked and tightened before commissioning!

IMPORTANT:

Before commissioning, the upper stop (consisting of the hexagon head screw incl. nut) must be mounted without fail. The setting and function of the monitoring switch must also be checked.

Further information is available at:
www.bode-components.com